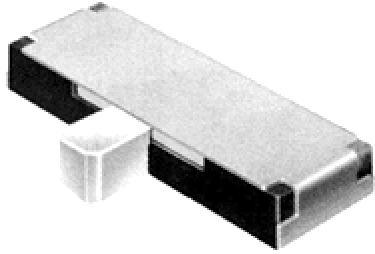


SMD TYPE SWITCHES | SLIDE SWITCHES



[1300N]

Typical Specifications

1. Rating : DC4V 0.3A
2. Contact Resistance : 70ΩMax
3. Operating Force :
A→B,C→B = 150±100gf
B→A,B→C = 200±150gf
4. Operating Life : 10,000Cycles

Model No.	Knob t(mm)
1300NA	1.1
1300NB	0.4

OUTLINE DRAWING

