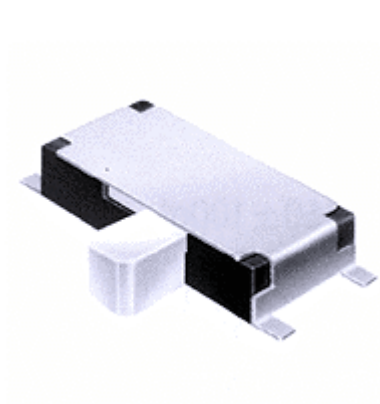


SMD TYPE SWITCHES | SLIDE SWITCHES



[1290P]

Typical Specifications

1. Rating : DC4V 0.3A
2. Contact Resistance : 70ΩMax
3. Operating Force : 150±100gf
4. Operating Life : 10,000Cycles

Model No.	Knob t(mm)
1290PAL	1.1 (L=2.3)
1290PB	0.4

OUTLINE DRAWING

