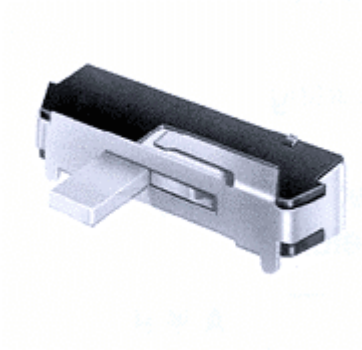


## SMD TYPE SWITCHES | SLIDE SWITCHES



[1270]

### Typical Specifications

1. Rating : DC6V 0.3A
2. Circuit : 1C-2P
3. Timing : Non-Shorting
4. Travel : 2mm±0.1
5. Operating Force : 150±100gf

Model No.	A
1270	With Embossing Cover
1270N	Without Embossing Cover

OUTLINE DRAWING

