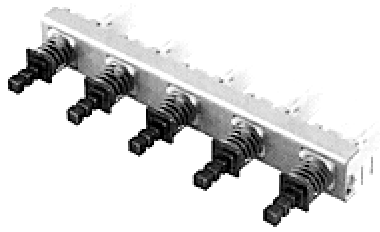


BULK TYPE SWITCHES | PUSH SWITCHES



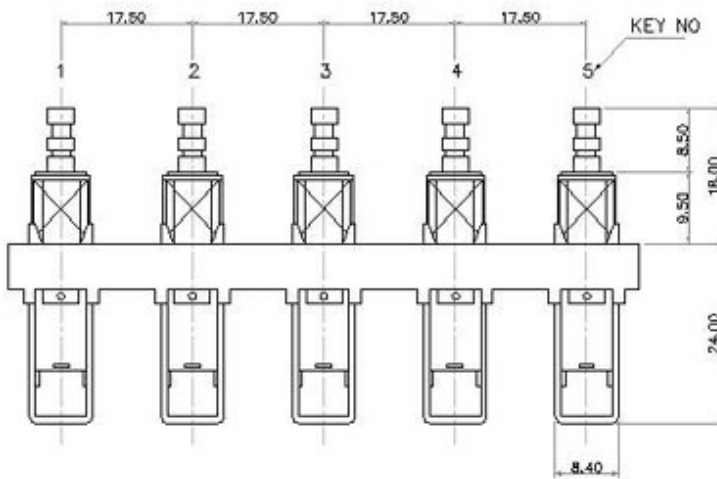
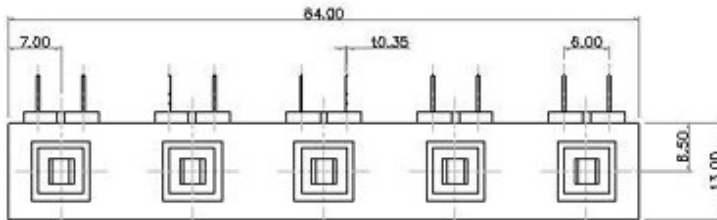
[2256A]

Typical Specifications

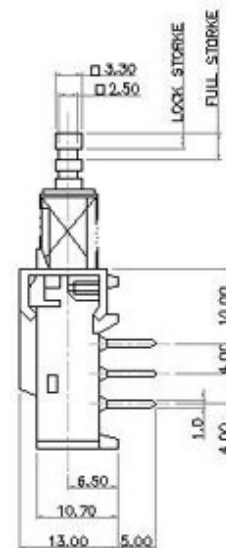
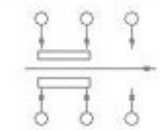
1. Rating : DC25V 1A
2. Circuit : 2C-2P
3. Timing : Non shorting.
4. Operating Mode : Self-lock, Non-lock
5. Operating Force : $300 \pm 100\text{gf}$

Model No.	Stroke
2256A-5	Full 3.5 Lock 2.5
2256B-5	Full 2.5 Lock 1.5

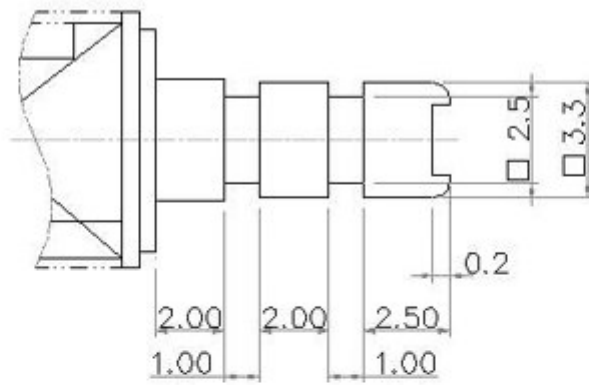
OUTLINE DRAWING



CIRCUIT DIAGRAM



DETAIL OF LEVER



CIRCUIT DIAGRAM

