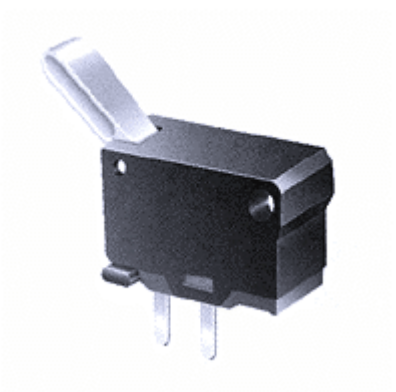


# DETECTOR SWITCHES | DETECTOR SWITCHES

[1285D]



## Typical Specifications

1. Rating : DC 30V,0.1A
2. Circuit : 1C-1P
3. Operating Force : 5gf,50gf Max
4. Contact Resistance : 200mΩMax
6. Life : 20,000 Cycles Min.

## OUTLINE DRAWING

