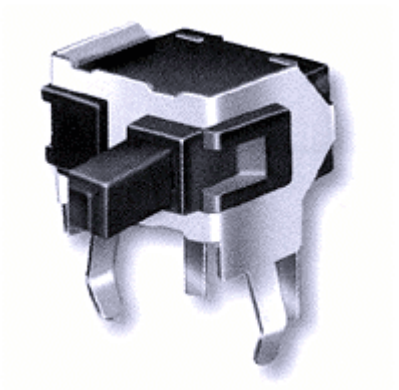


DETECTOR SWITCHES | DETECTOR SWITCHES



[1120PA]

Typical Specifications

1. Rating : DC 30V 0.1A
2. Circuit : 1C-1P
3. Timing : Non-Shorting
4. Travel : 0.8±0.1
5. Contact Resistance : 40 gf max
6. Operating Life : 50,000 Cycles

| PART | MATERIAL |
|----------|------------------|
| TERMINAL | PHOSPHOR BRONZE |
| CASE | NYLON66 |
| CLIP | PHOSPHOR-BRONZE |
| ACTUATOR | ACETAL |
| BRACKET | ELECTRO TEMPLATE |
| COVER | NYLON66 |

Features

Light operating force : 40gf max.

Highly reliable contact through our own self-wiping leaf contact construction

Available for vertical and horizontal type

Application

Detecting the insertion of various media

Identification of tapes in VCR, cassette deck, etc

Detecting the operation of VCR, cassette mechanism, etc

Order Code Explanation

1120

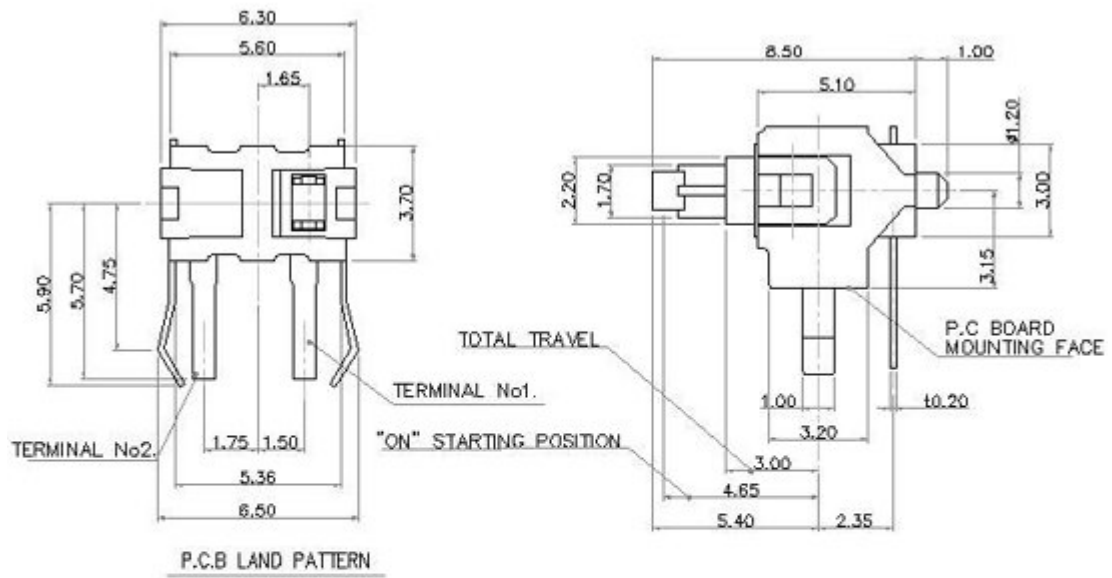
SPRING STYLE

HORIZONTAL(BRACKET)TYPE

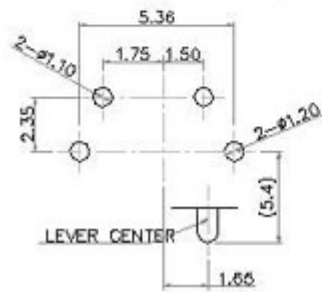
Knob Position
A : RIGHT
B : LEFT

Coil Spring Type : No Item
Spring Plate Type : P

OUTLINE DRAWING



P.C.B LAND PATTERN



CIRCUIT DIAGRAM

