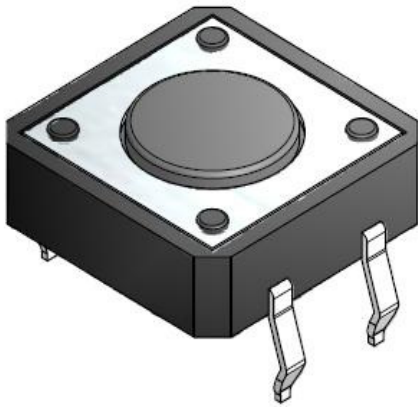


BULK TYPE SWITCHES | TACT SWITCHES



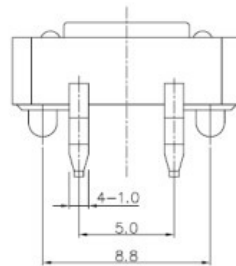
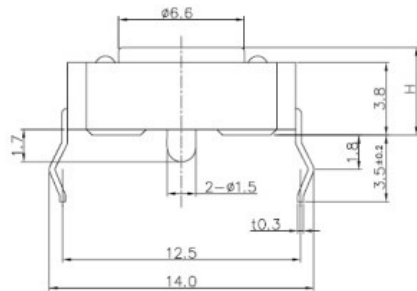
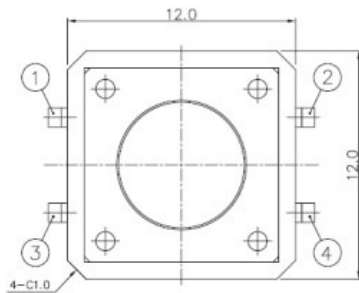
[1103E]

Typical Specifications

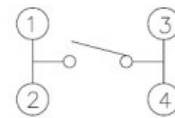
1. Rating : DC12V 50mA
2. Travel : 0.3 ± 0.1 mm
3. Contact Resistance : $100\text{m}\Omega$ Max.
4. Bounce : 10m SEC MAX.
5. Operating Force
 - * 1103E-1 : 130 ± 30 gf [300,000Cycle]
 - * 1103E-2 : 180 ± 50 gf [300,000Cycle]
 - * 1103E-3 : 250 ± 50 gf [100,000Cycle]

Model No.	H(mm)
1103E	4.3
1103EA	11.6
1103EB	7.7
1103ED	12.0

OUTLINE DRAWING



CIRCUIT DIAGRAM



P.C.B MOUNTING HOLES

