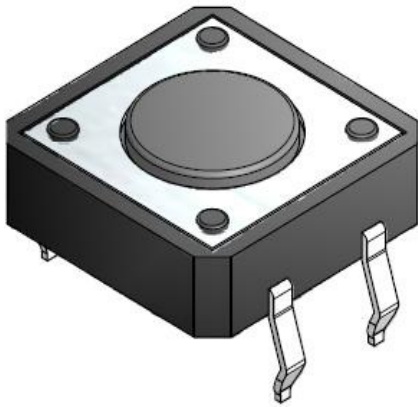


BULK TYPE SWITCHES | TACT SWITCHES

[1103]

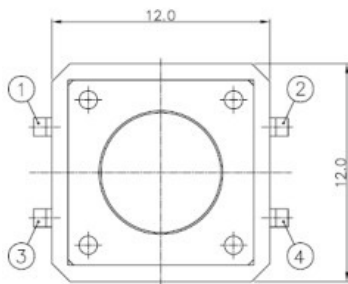


Typical Specifications

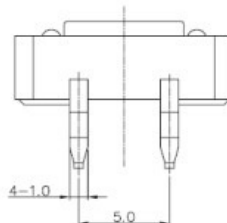
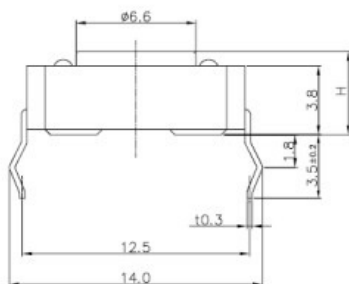
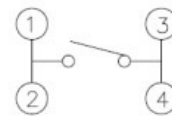
1. Rating : DC12V 50mA
2. Travel : 0.3 ± 0.1 mm
3. Contact Resistance : $100\text{m}\Omega$ Max.
4. Bounce : 10m SEC MAX.
5. Operating Force
 - * 1103-1 : 130 ± 30 gf [80,000Cycle]
 - * 1103-2 : 180 ± 50 gf [80,000Cycle]
 - * 1103-3 : 250 ± 50 gf [50,000Cycle]

Model No.	H(mm)
1103	4.3
1103B	7.7
1103F	9.5
1103FH	8.5

OUTLINE DRAWING



CIRCUIT DIAGRAM



P.C.B MOUNTING HOLES

