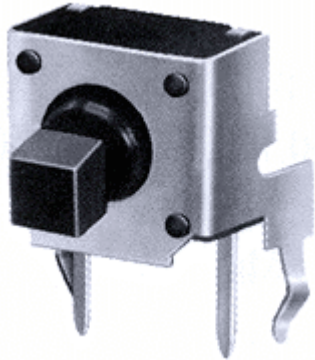


# BULK TYPE SWITCHES | TACT SWITCHES



[1102LT]

## Typical Specifications

1. Rating : DC12V 50mA
2. Travel :  $0.25 \pm 0.1$ mm
3. Operating Force :  
100,130,160,250 $\pm$ 50gf
4. Contact Resistance : 100m $\Omega$ Max.
5. Life: 80,000 Cycles Min.
6. Knob Size(L) = 2.4 & 2.8

## Features

- ▶ e= 11.1 & 10.7 & 9.0mm

## OUTLINE DRAWING

